

## **NORDICSTAR SV8 PI**

*Semi-vertical multideck*



Enabling every store to be unique!

---

Designed for all  
product categories



# Maximise display area possibilities

A versatile plug-in cabinet series that gives customers multiple points of contact, improving the sales.

NordicStar SV8 PI is a product line especially targeted for check-out area promotions. It offers a great combination of refrigerated cabinets and dry shelves with perfect product visibility units to ensure limitless possibilities for shopfittings. Maximise the refrigerated display area combining the energy efficient NordicStar SV8 refrigerated cabinets next to the ambient cabinet. The combination of refrigerated and ambient

shelving enables an impressive display possibilities for many brands and categories.

A thoughtful layout benefits both the quick shopper and the browser taking the longer way around.




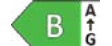

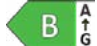
## CHOOSE NORDICSTAR SV8 PI FOR

- Large and attractive display surface area with wide range of models
- Attractive store layout with ambient shelving solutions
- Ergonomic height for more comfortable shopping and for loading the goods
- Designed for all product categories and for seasonal product offerings
- High quality cooling technology with natural refrigerant R290



TECHNICAL SPECIFICATIONS



NordicStar	SV8 PI C	SV8 PI GD/SGD	SV8 PI FC GD	SV8 PI C 45L/R
External length (mm)	600, 900	600, 900, 1200	600	1200
External height (mm)	1400	1400	1400	1400
External depth (mm)	700	700	700	700
Temperature range (°C)	3M2	3M0	3L1 / 3M0	3M0
Refrigerants	R290	R290	R290	R290
Energy efficiency class				

ACCESSORIES

STANDARD EQUIPMENT

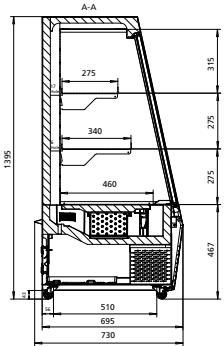
- Plug-in, automatic defrost water evaporation
  - Fan assisted air-circulation
  - LED lighting on canopy and shelf 6500K
  - End walls panoramic glass
  - 40mm price ticket rail
  - Two shelves (0-10%)
  - Two fixed wheels and two rotated wheels with brake
- Manual night blind
  - Double glass doors (GD)
  - Triple glass doors (F/FC GD)
  - Dixell controller with Modbus-IF
  - Solid end walls (F/FC GD)
  - Maintenance free condenser
  - Inside/outside colour: RAL 9005 black

OPTIONAL ACCESSORIES

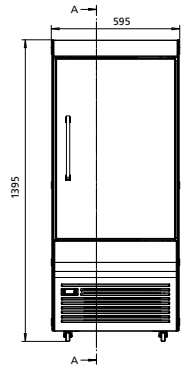
- Selection RAL colors
  - Additional 3rd row of shelf incl. LED lighting and price ticket rail
  - Customised branding
- Dry shelving options
  - 2nd back wall
  - Adjustable feet



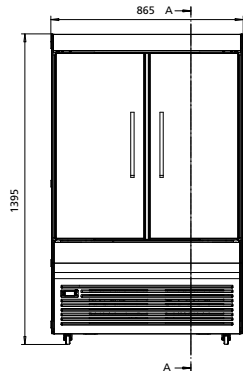
NordicStar SV8 PI 60-140-C-GD



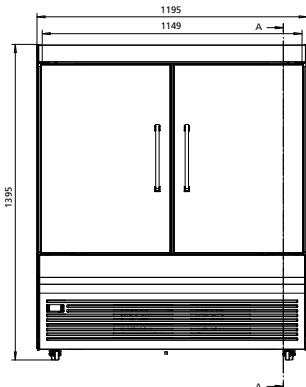
NordicStar SV8 PI 60-140-C-GD



NordicStar SV8 PI 90-140-C-GD



NordicStar SV8 PI 120-140-C-GD



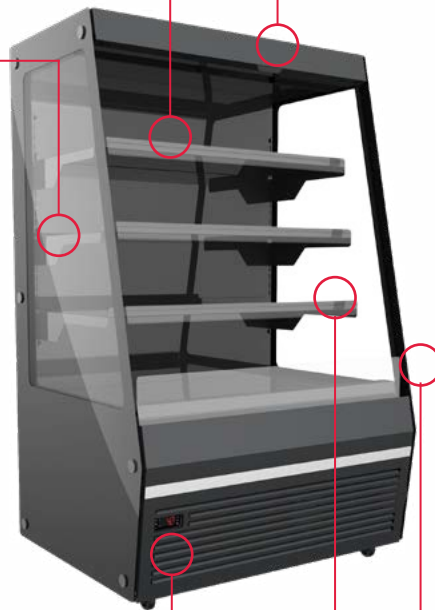


## BENEFITS

Adjustable feet

Easy cleaning and service

Many flexible setups



Low installation cost

Low energy consumption

Maintenance free condenser

NordicStar SV8 PI offers a great combination of refrigerated cabinets and dry shelves with perfect product visibility.





[www.epta-centralnortheurope.com](http://www.epta-centralnortheurope.com)

[www.bonnetneve.com](http://www.bonnetneve.com)

Follow us on:     by Epta