

NORDICSTAR VFI LUXO

Upright freezer cabinet



High volume freezer line.



Large volume freezer cabinet with full glass-doors

NordicStar VF1 Luxo full glass door and NordicStar VF1 Luxo TD twin door freezers offers great product visibility and volume.

New brands, flavours and pack sizes are constantly being launched in the frozen food segment. While good for business, continual innovation places demands on product display equipment.

Visibility and shopping experience

NordicStar VF1 Luxo is a cabinet that truly has it all. Designed with a superior shopping experience in mind, efficient lighting, large glass doors and optional glass end panels culminate in a complete solution with increased product visibility at its core. Black door frames are available as an option to further increase product visibility.

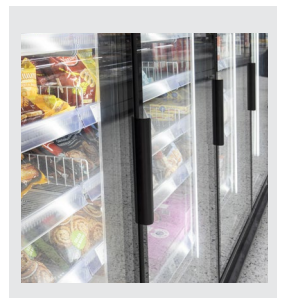
Volume and technology for better business

NordicStar VF1 Luxo boasts superior temperature performance, energy efficiency and

ease of maintenance. Low energy fans and LED lights guarantee further energy savings.

Smaller footprint and a more direct product facing

NordicStar VF1 Luxo TD offers great visibility for bottom sections products with a glass pane reaching down to base level. With twin doors (TD) accessibility is easy and effortless for daily usage. Smaller footprint (up to 20-30% smaller than conventional combi freezers) allows not only efficient use of space but also offers better ergonomics for consumers. Installation and commissioning is fast with NordicStar VF1 Luxo TD and it also lines up perfectly with standard NordicStar VF1 Luxo.



CHOOSE NORDICSTAR VF1 LUXO FOR

- Great product visibility
- Optional glass end panels for better product visibility
- Different cooling systems available
- Low-energy fans for energy saving
- LED lights for better internal illumination and energy efficiency
- Black door frames available as option



TECHNICAL SPECIFICATIONS



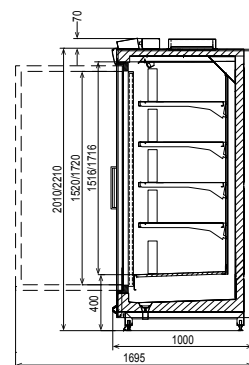
NordicStar VF1 Luxo	
External length (mm)	795, 1565, 2345, 3125, 3890
External height (mm)	2010, 2210
External depth (mm)	1000
Temperature range (°C)	-23 to -21
Refrigerants	R744 (CO ₂)
Energy efficiency class	

TECHNICAL SPECIFICATIONS

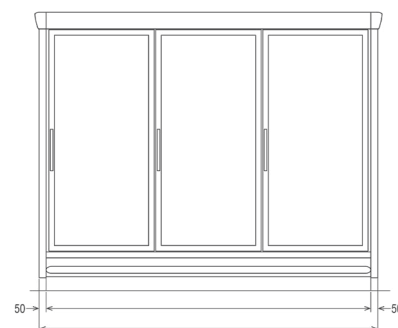


NordicStar VF1 Luxo TD	
External length (mm)	height 2010: 1565, 2345 height 2210: 1565, 2345, 3125, 3890
External height (mm)	2010, 2210
External depth (mm)	1000
Temperature range (°C)	-23 to -21
Refrigerants	R744 (CO ₂)
Energy efficiency class	

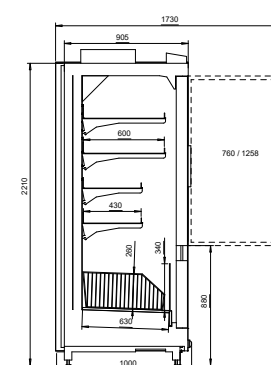
Tecto VF1 Luxo



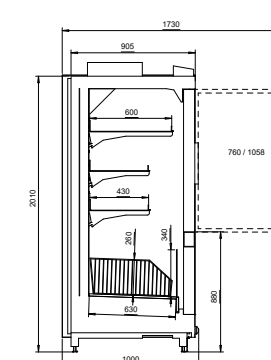
Tecto VF1 Luxo



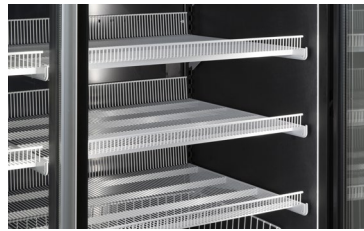
Tecto VF1 Luxo TD



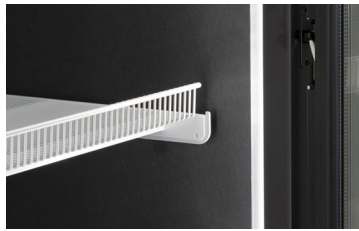
Tecto VF1 Luxo TD



ACCESSORIES



Grid shelves



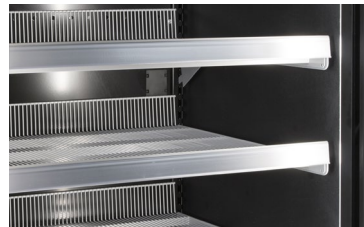
Vertical lights

STANDARD EQUIPMENT

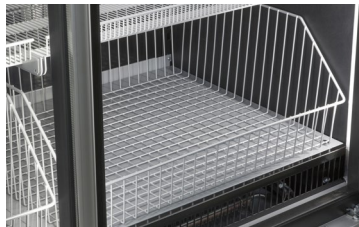
- Fan evaporator and expansion valves standard for R744 (CO2) refrigerant
- Defrost heater
- Thermostat
- Vertical lights
- LED lights

- Low energy fans
- Grid shelves

OPTIONAL ACCESSORIES



Price trim



Grid basket

- Thermometer
- Hot gas defrosting instead of electric
- Glass end panels
- Load dividers for shelf
- Front rail for shelves and bottom level

- Black door frames
- Adaptive control device
- Multiplexing kit
- Corner covers
- Pull out basket (not for Luxo VF1)



BENEFITS

Large glass doors ensure great product visibility



Effective lighting

Black door frames available as an option

With large glass doors and effective lighting NordicStar VF1 Luxo offers great product visibility, answering the growing demands of the frozen food segment.

BENEFITS

More direct product facing with a pane reaching down to base level



Higher overall volume

Smaller footprint

With a small footprint and easy floor layout the NordicStar VF1 Luxo TD offers both excellent product visibility and accessibility.



www.bonnetneve.com

Follow us on:     by Epta