



«Best in Class» Cabinets

Product overview



***Best in
class for
energy,
for all
types of
store***

A
↑
G

A



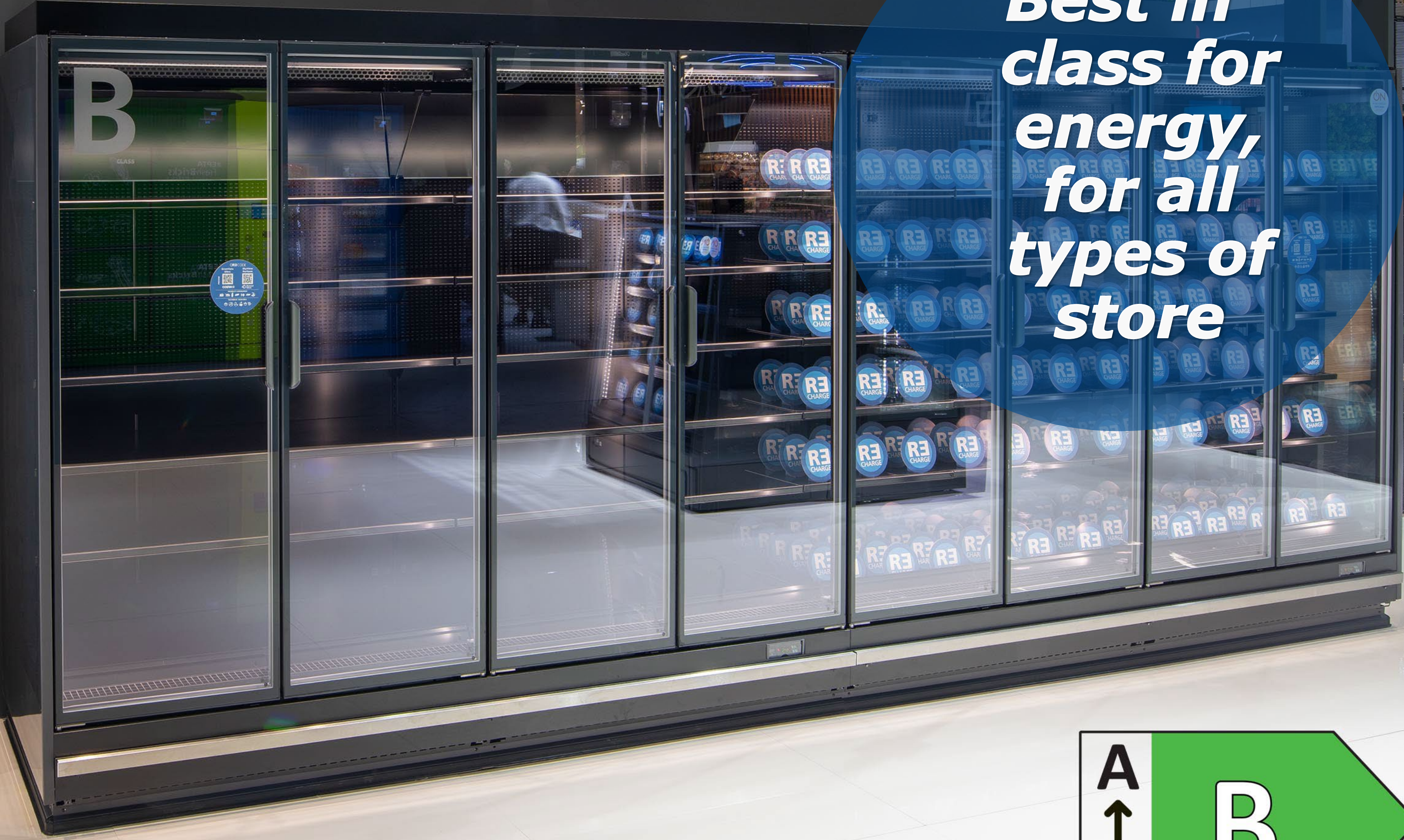
BACK TO SUMMARY



**Best in
Class
Cabinets**



This information is confidential and was prepared by Epta solely for our internal use.
It is not to be relied on by any third party without Epta prior written consent. Marketing 09/2020



***Best in
class for
energy,
for all
types of
store***



BACK TO SUMMARY



**Best in
Class
Cabinets**



This information is confidential and was prepared by Epta solely for our internal use.
It is not to be relied on by any third party without Epta prior written consent. Marketing 09/2020

Overview | Ecodesign and energy labelling regulations

- Came into force in 2021 in Europe
- It foresees that the **best Energy Classes are empty** in an initial phase
- **Class C** represents the best of the market.

ENERGY EFFICIENCY CLASS	EEI
A	$EEI < 10$
B	$10 \leq EEI < 20$
C	$20 \leq EEI < 35$
D	$35 \leq EEI < 50$
E	$50 \leq EEI < 65$
F	$65 \leq EEI < 80$
G	$100 > EEI \geq 80$

2023

2021



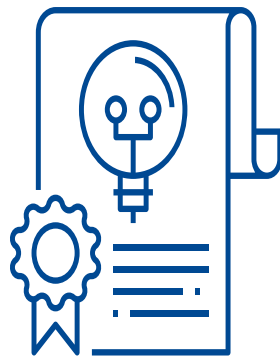
Best in
Class
Cabinets

Overview | Epta's capacity and capability

Our commitment to innovation



€ 54 million
Our investments
in innovation and
technology
from 2019 to 2021



**about 140
registered
patents
and designs**



~270
Employees in the
Group
dedicated to R&D



10
R&D Centres

1
Innovation
Centre



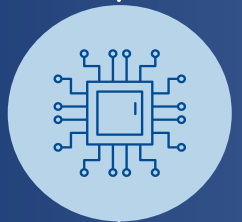
**Best in
Class
Cabinets**



- **THERMODYNAMICS:** Optimized fluid dynamics thanks to the use of CFD software, to generate the best airflow inside the cabinet. Evaporators with a specific design and shape, to maximize efficiency and serviceability



- **MATERIALS:** Innovative insulation materials, OUR advanced glass technology and sealing solutions to create high performing doors with the best insulation values



- **ELECTRONICS:** digital components which enable adaptative control and feedback

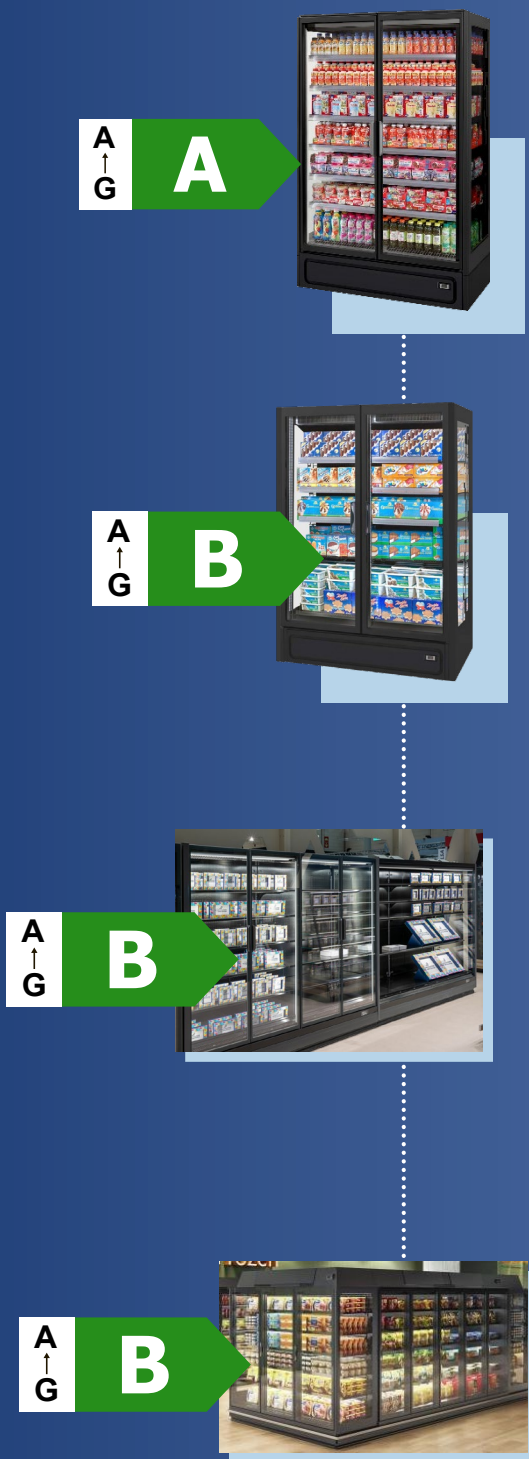


- **SELF CONTAINED UNIT** for plug-ins and integrals: we combine the latest technologies in refrigeration components to achieve the best performance



This information is confidential and was prepared by Epta solely for our internal use.
It is not to be relied on by any third party without Epta prior written consent. Marketing 09/2020

Best in Class Cabinets



MultiFresh Perform
Class A, with 40%* energy saving

MultiFreeze Perform
Class B, with 40%* energy saving

SkyView Performn (remote & integral)
Class B, with 26%* energy saving

SkyLight Integral Perform
Class B, with 35%* energy saving for the 4 doors version

*compared to previous model



Best in
Class
Cabinets

FRESH AND PROXY

Best in class for energy class

- CLASS A specific configuration: -40% energy saving vs the previous model
- Value doors, Value LEDs, panoramic ends and variable speed compressor, L=1250

Increased storage volume

- More than +10% internal volume increase due to evaporator repositioning, full base deck and deeper shelves +50mm

Range Flexibility and Modularity, Merchandising over the SlimFit family for Proxy stores.

- Comprising Efficia / Modular models
- Including 2D length
- Multiplexability
- MultiCity family feeling
- Embedded LINEON



Best in Class Cabinets

STRENGTHEN THE FROZEN FOOD OFFER WITH AN UPGRADED FLEXIBILITY.

Best in class for energy class

- CLASS B specific configuration: -40% as energy saving vs the previous version
- Advance passive doors, Value LEDs, panoramic ends and variable speed compressor, 2D or 3D

Range Flexibility and Modularity for Proxy and Super stores.

- Comprising Efficia / Modular models
- Including 2D, 3D lengths
- Multiplexability and single-injected case
- MultiCity family feeling
- Embedded LINEON



Best in Class Cabinets

STRENGTHEN THE FROZEN FOOD OFFER WITH AN UPGRADED FLEXIBILITY

- Best Energy Class « B » with 26% energy saving compared to previous version
- New Insulation, sealed doors, super evaporator, adjustable fan speed setting
- Best flexible solutions for all types of store
- Homogeneous aesthetics with Granfit/Skyview family

Features:

- Closed cabinet
- Cabinet one Height H20 (2110)
- Same external dimensions
- Available in Modular / Modular (P6),
- Length: 125 multiplexible 125/250/375
- Temperature class : Classe 3M1



Best in Class Cabinets



	Performance	Multiplexable	EOL	Length				Basement		
				125	188	250	375	P5	P6	P8
SkyView Perform	3M1	YES	NO	●	NO	●	●	NO	●	NO

This information is confidential and was prepared by Epta solely for our internal use. It is not to be relied on by any third party without Epta prior written consent. Marketing 09/2020

FIRST IN CLASS FOR CONVENIENCE AND HARD DISCOUNT

Best Energy Class « B » with 26% energy saving compared to previous version

- Best flexible solutions for Convenience and Hard discount store.
- R290A refrigeration circuit F-Gas compliant and environmentally friendly solution
- Height H20 (2110) with smaller internal facing (1685 mm vs the 1715mm)
- Same external dimensions
- SCU in the base for easy service access



Features:

- System in the low part
- Available in Air: Efficia, Modular and Volum
- Available in Waterloop: Modular/
- Length: 125 multiplexible /250/375 and EOL
- New Height of facing
- Natural gas R290
- Temperature class: Classe 3M1
- Closed cabinet

	Performance	Multiplexable	Length				Basement		
			125	188	250	375	C	N	L
SkyView Integral Air	3M1	YES	●	P6	●	●	●	●	●
SkyView Integral Water	3M1	YES	●	NO	●	●	NO	●	No



This information is confidential and was prepared by Epta solely for our internal use. It is not to be relied on by any third party without Epta prior written consent. Marketing 09/2020

Best in Class Cabinets



BEST IN CLASS
IN THE FROZEN FOOD AREA

- Best Energy Class « B » with **35%** energy saving compared to previous version in the 4 doors version
- **3L1** performance class according to EN ISO 23953-2.
- **R290** refrigeration circuit F-Gas compliant and environmentally friendly
- **High efficiency** self-contained unit with new generation inverter compressors.
- **Door frame energy free:** heater replaced by a hot pipe using the unit heat. Benefits: energy-saving and reduced heat rejected into the store.
- **Defrost:** new Epta Hybrid defrost management with self-evaporating tray.
- **Passive doors** (low consumptions).
- **LED lighting Advance 4000K** on mullions.
- **2 Panoramic endwalls.**
- **Controllers** Dixell XWi70K, Carel IJFood.
- **Power supply** 230V/1ph/50hz or 400V/3ph/50Hz.



	Performance	Multiplexable	Length (mm)					Frequency 50Hz	Integral
			2d(1565)	3D(2343)	4D(3124)	5D(3905)	3DS EOL (2025)		
Efficia	3L1	●	●	●				●	PROPANE R290
Modular	3I1	●	●	●	●	●	●	●	



Best in
Class
Cabinets



This information is confidential and was prepared by Epta solely for our internal use. It is not to be relied on by any third party without Epta prior written consent. Marketing 09/2020

www.bonnetneve.com



Epta S.p.A. participates in the ECC programme for:
Refrigerated display cabinets (RDC); Check ongoing validity
of certificate online: www.eurovent-certification.com